

In this newsletter
read about

- cAP ax
- RB5009UPr+S+OUT
- CCR2004-16G-2S+ revision
- New regulations: default password
- Train the Trainer
- New #MikroTips
- Spotted In The Wild
- wAP LTE kit & Aeronos

cAP ax

\$ 129



The best-selling ceiling access point is back – stronger than ever!

A new generation of wireless greatness for your office, hotel, mall, or any other setups in crowded areas.



FAST AND RELIABLE
802.11AX WIRELESS



MODERN QUAD-CORE
1.8 GHZ CPU



2X GIGABIT ETHERNET PORTS



POE-IN & POE-OUT TO POWER OTHER
DEVICES (LIKE CCTV CAMERAS!)



1GB OF RAM



ROUTEROS V7



MULTIPLE POWERING
OPTIONS



REMAINS HIDDEN IN
PLAIN SIGHT



MANAGE HUNDREDS OF
DEVICES EASILY WITH CAPsMAN
MANAGEMENT SYSTEM!

GEN
6

802.11ax
Wireless



When it comes to wireless network in the office, **you can't afford to cut corners and risk inhibiting your team's performance.** You need excellent coverage throughout the premises. You need a device that can handle a large number of clients. **You need a reliable, flexible, cost-effective solution: the cAP ax!**



Both open office and cubicle layouts usually encounter a variety of network issues: signal gets absorbed, reflected, it becomes unstable. Mirrors, tinted glass, TVs, metal file cabinets – all sorts of things can get in the way. Our solution is simple, effective, and elegant: let your access point rise above all the obstacles! In other words, **a ceiling access point is a great way to prevent signal loss in large, crowded areas with many obstacles.**

There is another benefit to this form-factor: cAP ax **remains hidden in plain sight**, attracting **less unwanted attention** than a smoke sensor. Your clients, guests, or colleagues won't even notice it. But they will definitely notice the blazing-fast wireless connection!

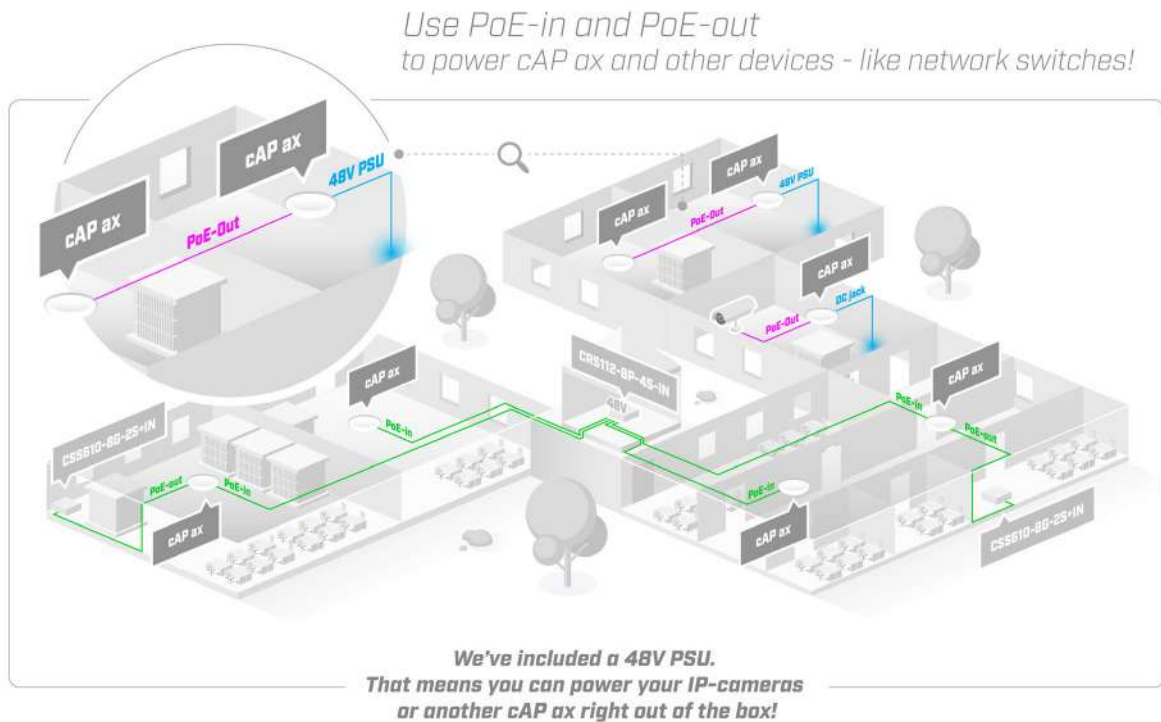
With the Generation6 802.11ax wireless standard, we're looking at up to **40% higher speed in the 5 GHz** and **up to 90% higher speed in the 2.4 GHz spectrum**, if we compare it to the previous generations! But what's more important than speed is the stability. Our latest AX devices can withstand and navigate even the toughest wireless interference scenarios, offering **the most stable and uninterrupted signal** to date!

cAP ax features a modern quad-core CPU running at 1.8 GHz, NAND storage, and a gigabyte of RAM. Enough to harvest the full potential of the most powerful networking software on the market – RouterOS v7! Complex firewall rules, IPsec hardware encryption, Wireguard, BGP, advanced routing, or multiple remote work VPN tunnels – cAP ax can do it all!



Compared to the previous generation, cAP ax offers multiple enhanced authentication types: OWE, WPA3-PSK, WPA3-EAP, and 802.11r roaming.

cAP ax is also a great way to make your office network installation and maintenance so much easier, as it features **PoE-in and PoE-out**. That's right – you can **use cAP ax to power other devices**, such as network switches, CCTV cameras, or even another cAP ax! And, speaking of easy office networks... **Just a few clicks** in our latest **wifiwave2 CAPsMAN central management system** - and you're done setting up **hundreds of cAP ax devices!** You can use all sorts of MikroTik devices to run CAPsMAN effortlessly, for example - your main gateway.



Quick cAP tip: the customizable mode button in the center will turn off cAP's lights, but you can reconfigure it to launch any RouterOS script.

	cAP ac	cAP XL ac	cAP ax
CPU	4 x 710 MHz	4 x 710 MHz	4 x 1.8 GHz
RAM	128 MB	128 MB	1 GB
Storage	16 MB flash	16 MB flash	128 MB NAND
Gigabit Ethernet	2	2	2
PoE-Out	1	1	1
2.4GHz MIMO	2x2	2x2	2x2
5GHz MIMO	2x2	2x2	2x2
802.11ax	-	-	Yes
TX Gain (2.4 / 5GHz dbm)	26 / 26	26 / 26	24 / 24
Antenna Gain (2.4 / 5GHz dbi)	2.0 / 2.5	6.0 / 5.5	6.0 / 5.5
List price	85	99	129

RB5009UPr+S+OUT

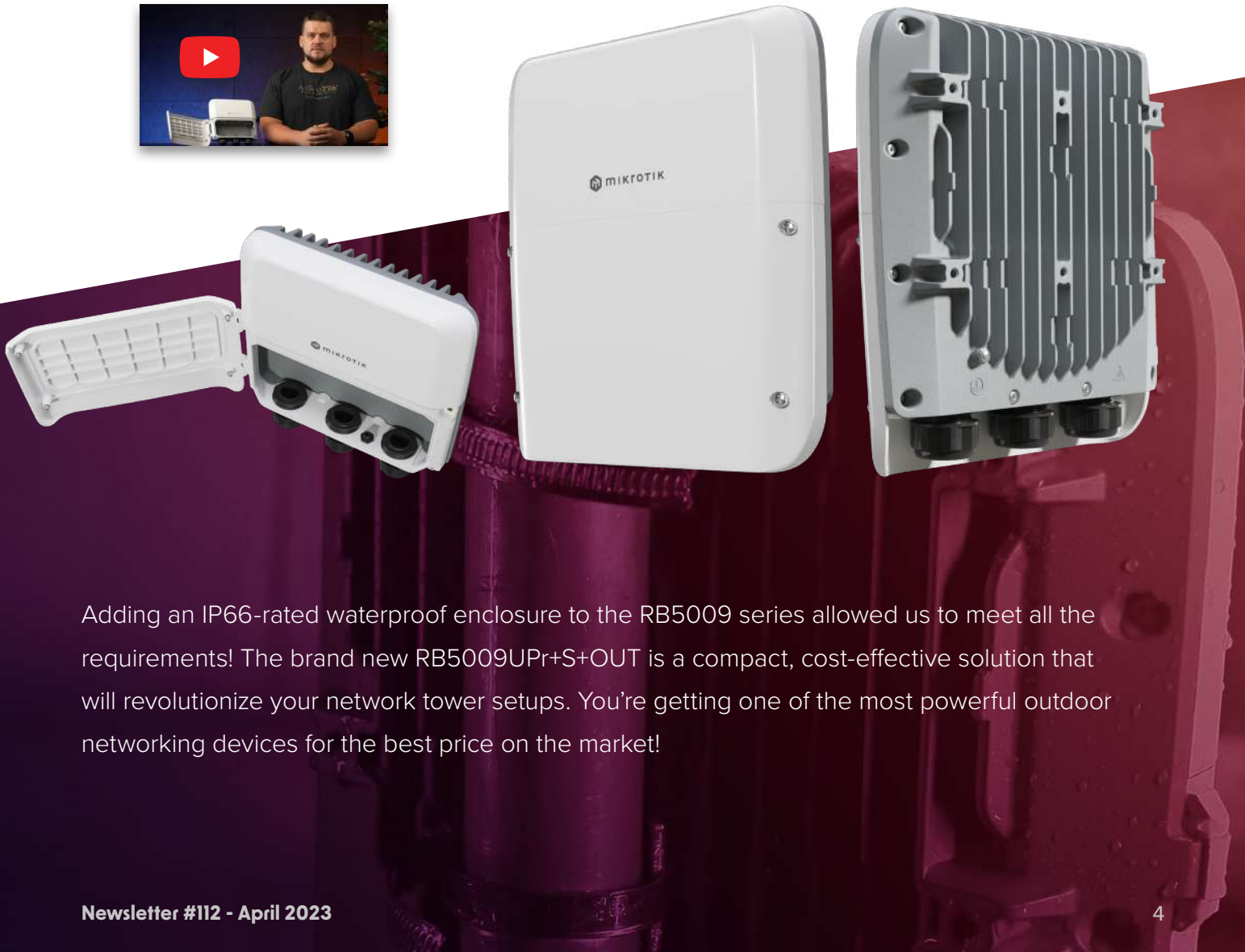
\$ 319 

An outdoor version of our best-selling heavy-duty PoE router.
Extensive power redundancy for the best price!

 7X GIGABIT ETHERNET PORTS	 ONE 2.5 GIGABIT ETHERNET	 POWERFUL QUAD-CORE CPU	 10G SFP+
 1GB DDR4 RAM	 1GB NAND	 9 POWERING OPTIONS: <small>(INCLUDING A 2-PIN TERMINAL!)</small>	 ROUTEROS V7

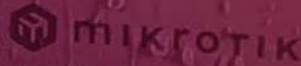
As a network administrator, you never know when the next windstorm, lightning, flood, heatwave, or a power outage will strike. But with the right tools you can protect your network from most troubles! Here's our wishlist for the perfect tool:

- easy to deploy
- works well in ANY weather
- provides extensive power redundancy
- can be connected via most common networking interfaces
- has a CPU that is strong enough to take full advantage of the most powerful networking software in the world – RouterOS v7
- doesn't cost a fortune



Adding an IP66-rated waterproof enclosure to the RB5009 series allowed us to meet all the requirements! The brand new RB5009UPr+S+OUT is a compact, cost-effective solution that will revolutionize your network tower setups. You're getting one of the most powerful outdoor networking devices for the best price on the market!

Like the indoor version, this RB5009 has 7x Gigabit Ethernet ports, one 2.5 Gigabit Ethernet port, a 10G SFP+ cage, and a full sized USB3 port!



When we say “extensive power redundancy”, we really mean it: the unit offers **9 possible ways of powering**. There’s a **2-pin power connector** on the front, as well as **PoE-in and PoE-out on all eight Ethernet ports**. The board can use any of these sources to power itself, choosing the one with the highest voltage when multiple sources are available. RB5009 takes up to 21W to power itself. If you’re using PoE-in, the board will stay on even if 8 of your 9 power sources suddenly go down. **Unprecedented redundancy!**

All power options support a **wide voltage range of 24 – 57 V**. However, you can not mix the voltages.

Each PoE-out port can supply up to 25W of power. All the ports combined are limited to 130W, which should be enough for most setups. You can specify maximum available power from your power sources manually, if necessary. If you’re using PoE-out to power other devices, you have to provide power via the 2-pin connector to power those.

This product also features single voltage PoE-out – it can either be 802.3at/af compatible OR low-voltage PoE-out. That is determined by the voltage on the 2-pin connector, as no voltage conversion is done on this board.

When it comes to processing power and available use-cases, this router can do it all:

- PPPoE termination
- DHCP to customers
- Local Queuing
- MPLS Push/Pop/Swap and MPLS Forwarding
- VPLS/VXLAN Termination
- Hardware bridging, and so much more!



Compatible with the MTP250 26V and 53V outdoor power supplies!

The RB5009 series keep redefining **affordable reliability for small, medium, and even large ISPs!**

New CCR2004-16G-2S+ revision

Unfortunately, due to a global shortage of specific components, we had to make a difficult decision to either stop the production of CCR2004-16G-2S+ entirely or switch to manufacturing the units without the USB port. After careful consideration, we've decided to keep the production going without the USB ports for now.

The product code remains the same. However, we're adding an "r2" in the serial number - for example, serial number 123407ABCDEF/313/r2 would mean that this is the version without the USB.

Thank you for understanding, we're doing everything we can to find the best solution as soon as possible.

CCR2004-16G-2S+
E01: 00: 00: 00: 00: 00: 00
E18: 00: 00: 00: 00: 00: 11
SN: 123407ABCDEF/313/r2
User: admin
Password: PASSWORD-0000



This device complies with Part 15 of the FCC Rules. Operation is subject to the following two conditions:
1) this device may not cause harmful interference,
and 2) this device must accept any interference received, including interference that may cause undesired operation.

Manufacturer: Mikrotiks SIA
Brivibas gatve 214i, Riga, Latvia, LV1039



New regulations: default password

To comply with upcoming regulations for better security on networking devices, we are rolling out default passwords on our hardware. You may already see a default password on some of the devices you receive. The **password is printed on the sticker on the device itself**.

Eventually, we plan to have a default password on all devices, but the rollout will take some time.

Contact your MikroTik distributor if you lost access to the stickers and need help finding the default password. We've provided tools for distributors to assist you in such a case.

Note: some devices have the sticker hidden, like the hAP ax³, which has a special slide-out drawer with the sticker.



TRAIN THE TRAINER

April 26-28

As you know, MikroTik has a global network of consultants, distributors, and expert trainers. If you get certified, you can join their ranks and build your own business!

Watch the video or [click here](#) to learn more!



Even more #MikroTips and tricks

RUNNING
X PROXMOX
WITH THIS?

SCAN YOUR NETWORK,
KNOW YOUR NETWORK!

ThingsBoard
IoT SERVER
ON YOUR ROUTER
FOR FREE!

IoT SERVER ON YOUR
ROUTER FOR FREE!
PART 2

ThingsBoard

GENERATE ALL
THE TRAFFIC!

HACK THE
NETWORK

WE FIXED IT!
USE RAM
TO STORE FILES!

GO VIRTUAL

eve
Emulated Virtual Environment

WILL IT
WORK?

eve
Emulated Virtual Environment
Next Generation

EMU

vmware
STEP-BY-STEP GUIDE

Spotted In The Wild

We want to see YOUR setups! Send them over to marketing@mikrotik.com, get featured in our videos and win MikroTik Merch store coupons!
More information in the video below.

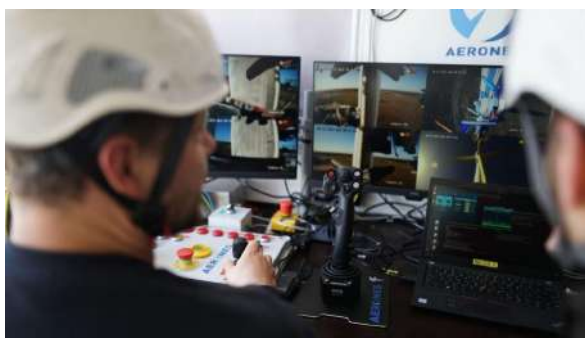
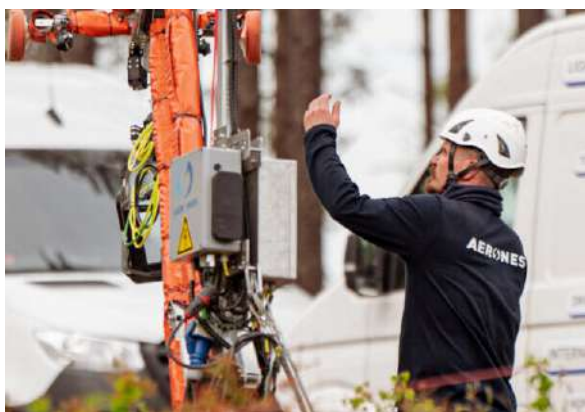


Take a stroll down memory lane with Viktors,
hAP mini, and the good old CSS326-24G-2S+RM!



wAP LTE kit catching the wind with Aeronex wind turbine care systems

Aeronex is a Latvian company that crafts extraordinary, innovative robotic wind turbine care systems. Leveraging patented robotics technology, Aeronex service teams deliver faster, safer, and more effective services for wind operators worldwide. And if you take a closer look at their wind turbine blade inspection solution, you'll find the never-failing classic – MikroTik wAP LTE kit!



wAP provides remote control and diagnostic data transmission from the robotic systems performing wind turbine maintenance. The whole robotic system operates without any downtime for the turbines and is considered to be much safer than the previous drone-based solutions.

“Technicians who would otherwise hang hundreds of meters in the air manually working on each turbine blade, where safety concerns and weather limit operations, can now operate these inspection and maintenance services from the safety of a van, with controls that are as easy to use as a kid’s gaming console,” says CTO of Aeronex Jānis Putrāms.



Here you can download all the visuals used in this newsletter

